

# ***Wet and dry vacuum cleaner***



**Ventos 25**

**Ventos 35**

**Operating Instructions**  
**Read and conform**  
**safety instructions**  
**before use**

# Description

## Dear Customer

We would like to congratulate you on the purchase of your new wet/dry vacuum cleaner with integrated chassis and accessories box and thank you for buying it!

For ease of use, the device is described on the following pages.

It will help you with all types of cleaning work , eg:

- **Machinery**
- **Building sites**
- **Buildings**
- **Vehicles**
- **Furniture**
- **Containers, etc.**

Technical specifications	Kränzle Ventos 25	Kränzle Ventos 35
Power intake	350 - 1.200 W	350 - 1.200 W
Mains voltage	230V 50/60 Hz	230V 50/60 Hz
Admissible voltage range	220 - 240 V; 50/60 Hz	220 - 240 V; 50/60 Hz
Power intake	6,1 - 5,6 A	6,1 - 5,6 A
Fusing	16 A	16 A
Volume flow (air) max., Turbine	228 m³/h	228 m³/h
Vacuum max., Turbine	23.000 Pa	23.000 Pa
Filter surface	14.000 cm²	14.000 cm²
Suction hose	Ø 36mm x 3,5m	Ø 36mm x 3,5m
sound pressure level acc. to DIN 45 635	62 dB(A)	62 dB(A)
Container volume	25 l	35 l
Dimensions	625 x 380 x 440 mm	625 x 380 x 440 mm
Weight (without accessories)	12 kg	12 kg
Length of power line	7,5	7,5
Protection type	IP X4	IP X4
<b>Order no.:</b>	<b>58 380 0</b>	<b>58 380 1</b>

# Description



## Construction

The KRÄNZLE VENTOS 25 / 35 are mobile machines. The construction is shown in the plan.

## Function

- |     |                                 |    |                                       |
|-----|---------------------------------|----|---------------------------------------|
| 1   | Suction hose                    | 8  | Accessories box                       |
| 2   | Suction handle                  | 9  | Brake                                 |
| 3   | Front nozzles                   | 10 | Lock slide for accessories box        |
| 4   | Suction aperture                | 11 | Lock bracket for accessories box      |
| 5   | ON/OFF switch                   | 12 | Lock bracket for suction head         |
| 6   | Vacuum regulator                | 13 | Pushbar (optional, only on VENTOS 35) |
| 7   | Storage bin (only on VENTOS 35) |    |                                       |
| 7.1 | Handle for storage bin          |    |                                       |

# Description

## Correct use

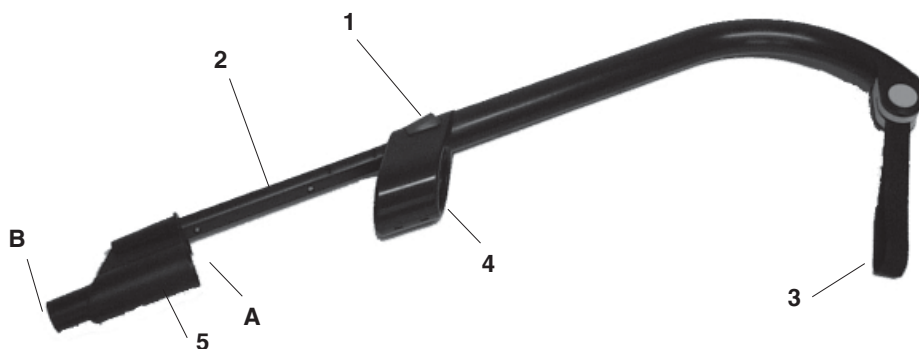
The vacuum cleaners are designed for vacuuming non-hazardous dust, dirt, sand, chips etc.

The cleaners are also suitable for vacuuming water.

The cleaners are suitable for heavy-duty use as set forth in EN 60335-1 and EN 60335-2-69.

The appliances have been inspected by TÜV Eschenborn in accordance with the CB procedure and also bear the GS and CE symbols.

## Suction handle



The equipment is fitted with a new type of suction handle to allow a relaxed style of work. This handle is ergonomically designed and can be adjusted in length for different vacuuming tasks. The cleaner is therefore comfortable to use whether you are vacuuming the floor or using it in an overhead position.

To adjust the length of the handle, slide the red locking button (1) forwards and pull out the extension (2). The telescopic tube can engage in 6 different positions.

The handle offers a belt sling (3) and a tunnel (4) for clean guidance of the hose, and a nozzle holder (5), various front nozzles can be attached to the the reverse side (A) of the suction hose and the front side (B).



**The suction handle is developed for front nozzles only and not for heavy-duty work such as scratching off stubborn dirt. Do not pull the extension further than the last lock-in position.**

# Description



## Accessories box

All Ventos 25 and Ventos models are equipped with an accessories box (8) for convenient storage of both the vacuum accessories and the power cable. The box has two locking slides (10) - one on the front side and the other at the rear of the cleaner - fitted to the open surface of the suction head.

To open them, slacken the two locking brackets (11).

The side opening is for putting in the suction hose and the power cable.

## Collecting vacuumed material

The cleaner offers 3 possibilities for collecting vacuumed material.

### 1.) Filter bag

The filter bag should only be used for vacuuming dry material. To empty, simply flip open the suction head until the lug engages.

### 2.) Dirt container

The dirt container can be used for vacuuming dry and wet material. To empty, simply flip open the suction head until the lug engages. The cover of the container with integrated front filter must be taken off and then the container can easily be lifted out of the cleaner.

### 3.) Dirt chamber in chassis

The dirt chamber in the chassis can take wet and dry materials.

## CAUTION!



**Always remove the top part of the vacuum cleaner before emptying the dirt chamber!**

# Description

## Storage bin (only on Ventos 35)

The Ventos 35 is equipped with a storage bin (7). This offers convenient space for vacuuming utilities and other work materials.

This bin is opened with a handle (7.1).

## Brake

The brake (9) is used to lock the wheels and prevent the cleaner from rolling away out of control.

## ON/OFF Switch

The cleaner is OFF when the switch is in the "0" position. Turn the switch (5) to position "1" to start the machine.

## Vacuum regulation

The vacuum regulator (6) is used to steplessly adjust the power of the vacuum. It allows precise adjustment for the task in hand.

## Cooling apertures

The cooling apertures (1) and (2) serve to cool the turbine.



**CAUTION!!!**  
**Never close or cover**  
**the cooling**  
**apertures.**



2

1

# Description

## Suction hose

The standard suction hose (1) is 3.5 m long and has a coupling at both ends. The larger coupling is fitted into the suction opening (4) of the vacuum. The somewhat thinner coupling is used to accommodate the suction nozzles or to connect the suction pipe.



**The couplings can be removed more easily from the vacuum or nozzle by light turning and pulling.**

## Motor protection

To prevent overheating, the motor has a temperature overload switch which cuts out the motor automatically if a critical temperature is reached.

If the overload switch cuts out the motor, the motor must be allowed to cool down for approx. 5 minutes before restarting.

A customer service workshop should be contacted if the motor does not restart automatically.



Component replacement and inspection work may only be performed by trained personnel, with **the equipment disconnected from the power mains** ie, with the **plug removed from the power socket**.

## Electrical connection

The cleaner is supplied with a 7.5 m power cable and plug.

The plug must be put into a properly fitted power socket. The voltage on the specification plate must match that of the power source.

The socket must be protected by a **16 A slow-acting fuse**.

When using an extension cable the connections must be correct. Plug-type connections must be splashproof and may not lie on a wet or moist surface.



# Safety Instructions



## Safety Instructions

- Only use accessories approved by Kränzle
- Never vacuum combustible or explosive dust (eg, magnesium, aluminium etc.)
  - RISK OF EXPLOSION!!!**
- Never vacuum combustible or explosive liquids (eg, petrol, paint thinners etc.)
  - RISK OF EXPLOSION!!!**
- Never vacuum aggressive liquids or solid matter (acides, lyes, solvents etc.).
- Never vacuum hot, glowing embers (hot ash, cinder etc.).
- Always pull the plug out of the power socket when the cleaner is not in use and before servicing.
- Protect the cable from heat, oil and sharp edges. Do not drive over, kink or distort the cable, etc.
- Do not touch the plug with wet hands.
- Check the plug and cable regularly and have it replaced by an authorised customer-service workshop if damaged.
- Do not leave the cleaner out in the rain.
- Never clean the cleaner with a water sprayer.
- Do not lift or transport the cleaner by the handle with a crane hook or hoist.
- Never allow the nozzles, pipes and hose close to your eyes or ears when the cleaner is in operation.



# ***You have purchased all this:***

## **1. KRÄNZLE - Wet/dry vacuum cleaner Ventos 25 / Ventos 35**

with accessories box



**1. Suction hose Ø 36mm x 3.5m**



**2. Suction handle**



**3. Suction nozzle set**

comprising upholstery nozzle, vacuum brush, corner nozzle, floor nozzle with 2 inserts, hand pipe and 50 cm extension



**4. Dirt container**

with lid and front filter integrated in lid



**5. Filter bag**



**7. Cable holder with fastening screws**



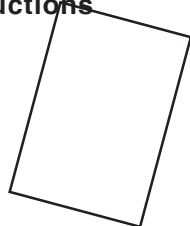
**6. Adapter suction hose nozzles**



**8. Phillips screwdriver**

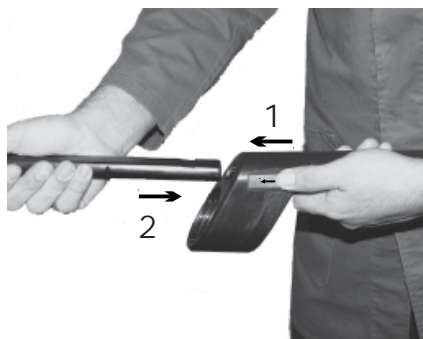


**9. Operating instructions**



# ***Assemble and configure the cleaner***

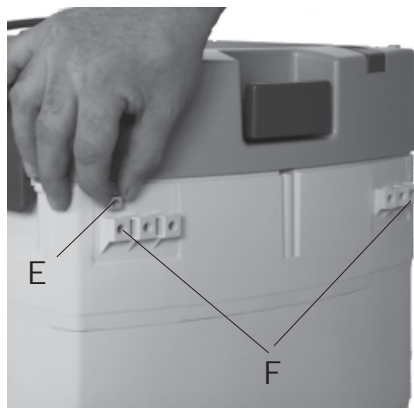
## **Fit extension**



Unlock suction handle by pushing red button into direction of arrow (1).

Insert the extension into the suction handle (2).

## **Attach the suction handle holder**



Fit a square nut (E) into the outer recess (F) on the rear of the cleaner.



Hold the suction handle holder from behind against the cleaner and screw it in twice.

# Start-up



1. Take the power cable, suction hose and nozzles out of the accessories box



- 
2. Connect the suction hose to the suction aperture



- 
3. Lay out the suction hose without kinks



# Start-up

## 4. Connect the hose to the suction handle

First put the hose through the sling, then pull it through the guide tunnel and plug it into the nozzle holder.



---

or 4 a) Connect the hose to the reduction piece



---

## 5. Fit the suction nozzle to the nozzle holder



# Start-up

## Vacuuming dry material

Put a filter bag in the container before starting the cleaner.

The filter element will be wet after vacuuming wet material.

A damp filter element blocks quicker when vacuuming dry matter.

For this reason you should always use a dry filter element when vacuuming dry material.



**Do not vacuum aggressive solid matter.**

**Do not vacuum smoldering objects (hot ash, embers etc.).**

**Do not vacuum combustible or explosive matter (eg, magnesium, aluminium etc.).**

## Vacuuming liquids and mud

**Always remove the filter bag before vacuuming liquids.**

The use of special wet filter elements (order number 58 400 5) is recommended.

The sensors will automatically shut down the vacuum when maximum capacity is reached.



**Do not vacuum combustible or explosive liquids (eg, petrol, paint thinners etc.).**

**Do not vacuum aggressive liquids or solid matter (acides, lyes, solvents etc.).**

## Compressed air

All cleaners have a compressed air aperture.

A suction hose can be fitted to this aperture.

The aperture has a cap which automatically opens when the suction hose is fitted.

The cap closes when the hose is removed and the cleaner switched off.

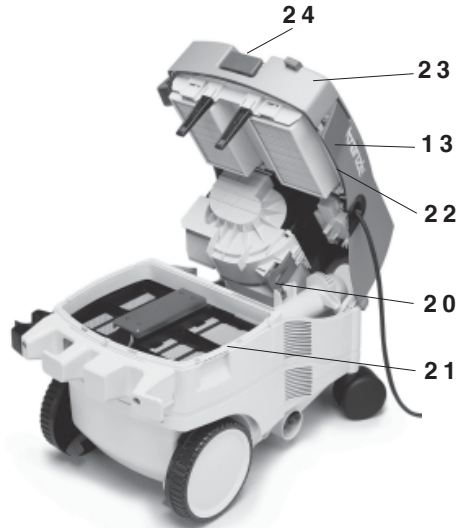


# Handling

## Opening/closing the cleaner

To change the filter bag or remove the dirt container you must first open the cleaner.

**To open the cleaner, slacken the locking brackets (13) on both sides of the cleaner and swivel the top part (23) upwards until the lug (20) engages.**



**Always clean the upper rim (21) of the dirt chamber before closing the cleaner, in order that the vacuum seals (22) can function properly.**

**To close the cleaner, lift the top part (23) slightly and press it sideways onto the lug (20) until it engages. Swivel the top part until it is back on the chamber rim (21). Close the locking brackets (13).**

## Cleaning filter elements

When the cleaner is used without a filter bag, dust and dirt is deposited in the filter elements.

The filter elements should be cleaned each time before the cleaner is opened or when vacuuming performance drops.

To clean, move the handle (24) with the cleaner closed approx. 10 times backwards and forwards. This vibrates the filter ribs and the dust will fall into the dirt container. Slide the handle back into the cleaner when you are finished.

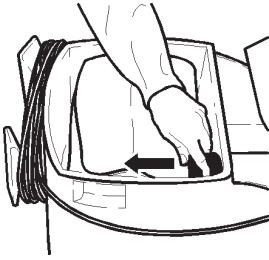


**The filter should be cleaned off each time before the cleaner is opened when vacuuming without a filter bag.**

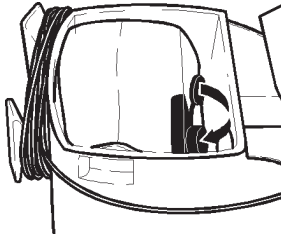
# Handling

## Changing the filter bag

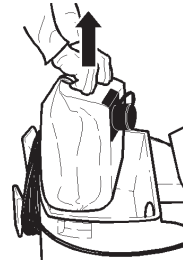
To change the filter bag first open the cleaner.



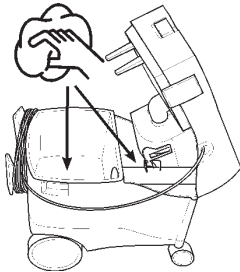
Remove filter bag cap from suction orifice (see print on bag).



Close the opening with the plastic cap.



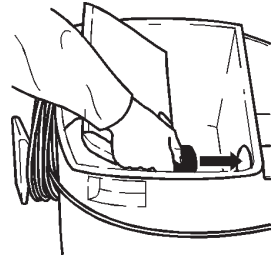
Lift the bag out of the dirt chamber and dispose of it responsibly.



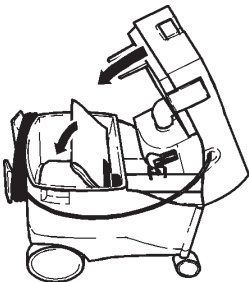
Clean the dirt chamber and the space around the vacuum turbine thoroughly (wipe with a damp cloth).



Put in a new filter bag.



Fit the black plastic cap into the aperture.



Close the cleaner.



**Important!**  
**Press the rim of the filter bag tightly onto the aperture.**

# Handling

## Emptying the dirt container

To empty the dirt container, first open the cleaner.



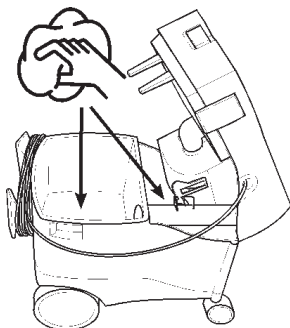
Lift the lid slightly from the rear ...



... and pull it backwards out of the container.



Take out the container and dispose of the contents responsibly.



Clean the dirt container and the space around the vacuum turbine thoroughly (wipe with a damp cloth).



**Important!**  
**Press the rim hard into the fitting.**

Replace the container in the cleaner.

Put the lid back on the container, fitting the rim through the aperture in the container and pressing it into the fitting.

Close the cleaner.



# Handling

## Removing the suction head

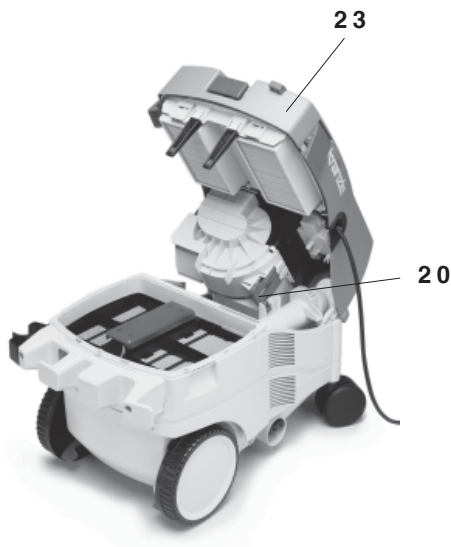
To empty the dirt chamber, first take off the top part of the cleaner - the suction head.

### Taking off the suction head

Open the cleaner (see page 11). Lift the top part (23) slightly and press the lug (20) from the side. Swivel the top part further until it reaches the stop (vertical position) and take it off horizontally forwards.

### Replacing the suction head

Slide the suction head from the front onto the base. Make sure that both bolts in the top part slide properly into the recesses.



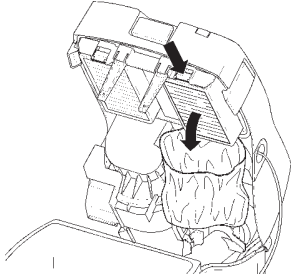
## Emptying the dirt chamber

Take off the suction head as described above. Dispose of the contents responsibly. Clean the top rim of the dirt chamber and the space around the suction turbine.

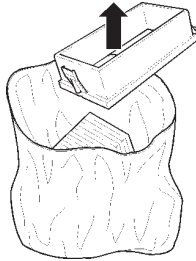
# Handling

## Changing the filter elements

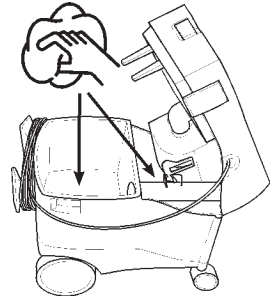
Open the cleaner.



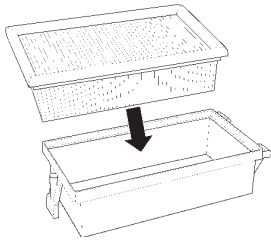
Press the locking buttons of the filter cassette. Tilt the cassette downwards.



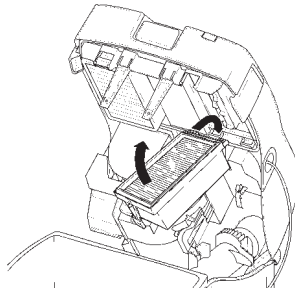
Remove the filter element and dispose of it responsibly.



Clean the dirt chamber and the space around the suction turbine (wipe with a damp cloth).



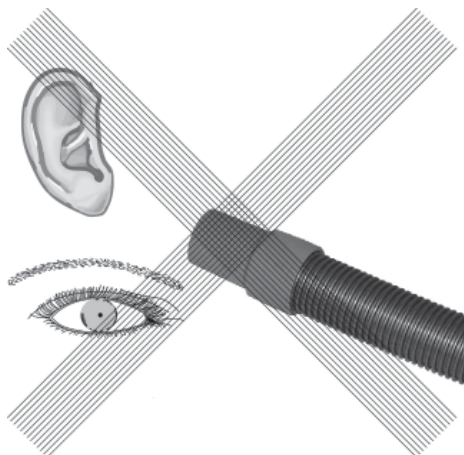
Place a new filter element into the cassette.



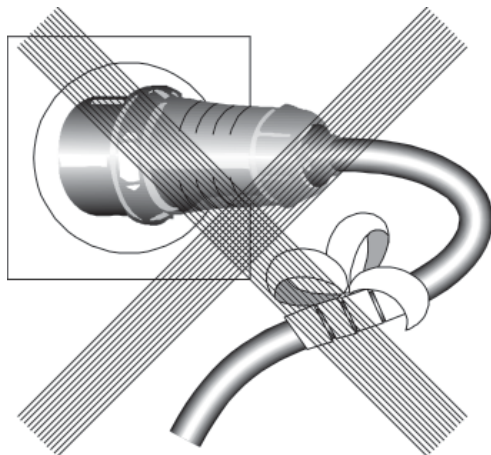
Hang the cassette in the holder and tilt it upwards until the locking buttons engage.

Close the cleaner.

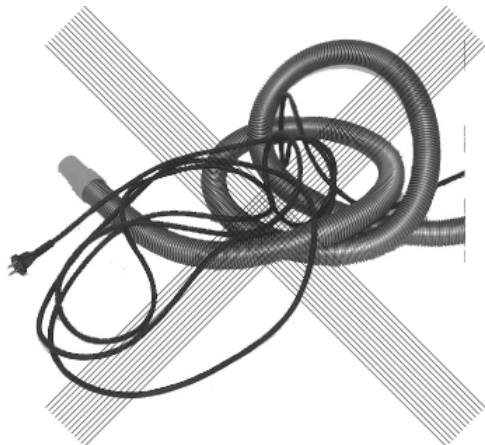
## *What you must never do*



**Never put the nozzles, suction pipes and hose close to your eyes or ears when using the cleaner!**



**Do not damage the cable or repair it incorrectly!**



**Do not loop or kink the hose or cable!  
Never pull the hose or cable over sharp edges!**

## **Oblique nozzle rubber**

Order number 58 402 2

## **Gap nozzle 300 mm long**

Order number 58 402 3

## **Animal care nozzles**

### **Vacuum comb**

Order number 58 401 9

### **Vacuum brush**

Order number 58 402 0

## **Capet nozzle**

Order number 58 401 8

## **Extension pipe**

1x 50cm plastic, order number 58 401 1

3x 33cm stainless steel,  
order number 58 401 4

## **Hand pipe, angular**

Plastic, order number 58 401 3

Stainless steel, order number 58 401 5

## **Universal brush nozzle**

Order number 58 401 7

## **Automatic power-up**

Order number 58 405 1

## **Additional dirt container**

Ventos 25, order number: 45 302 9

Ventos 35, order number: 45 303 0





Cleaning of irregular and coarse surfaces using oblique type rubber nozzle (order number: 58 402 2)



Vacuuming in tight and deep crevices eg, between car seats, or cleaning machinery with the 300 mm long gap nozzle (order number: 58 402 3)



Vacuuming dust when working with electrical tools controlled by power-up of the vacuum when the electrical tool starts. (order number 58 405 1)

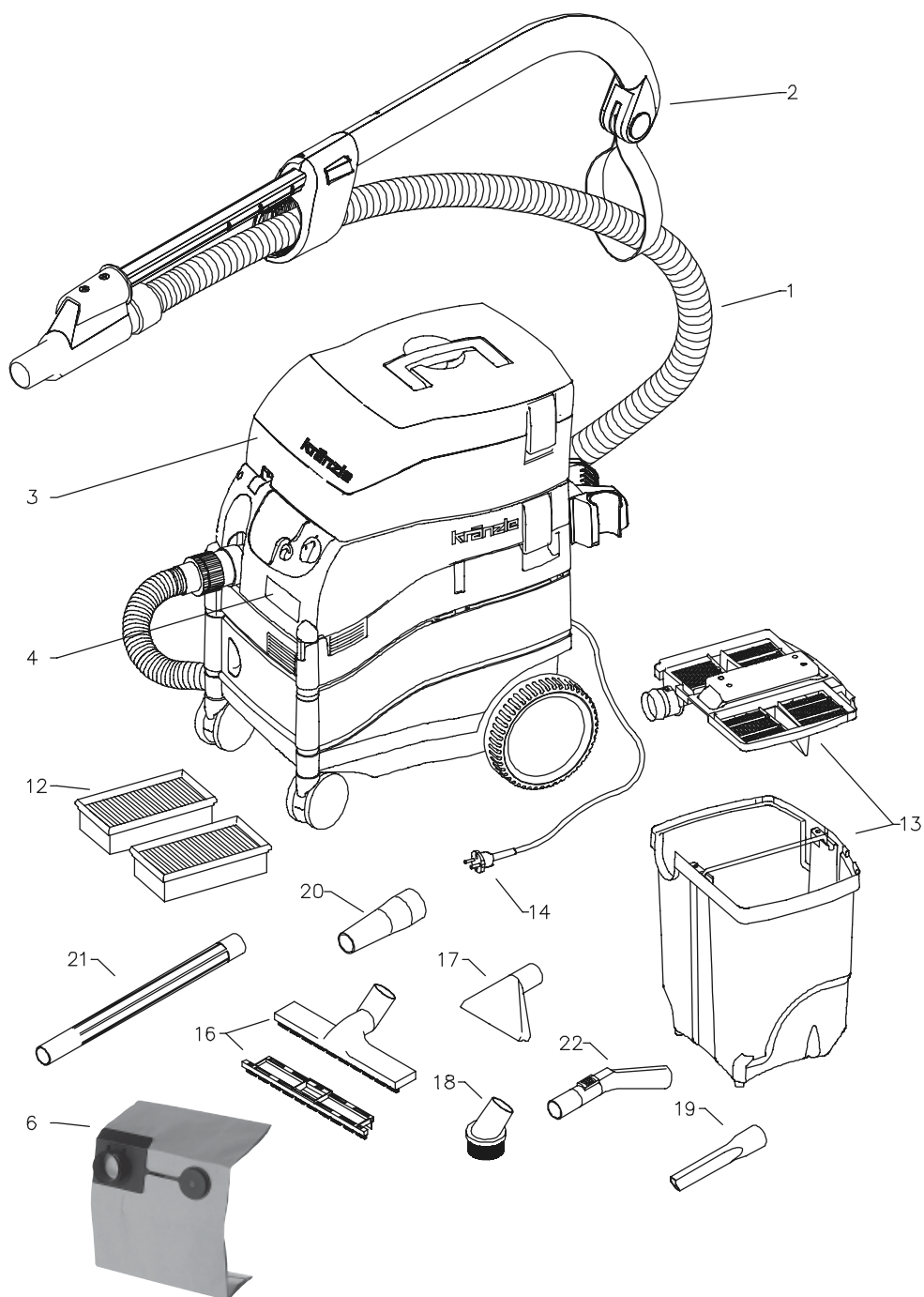


Separate vacuuming of machinery using different work materials (eg, brass and aluminium) by simply changing the dirt container. (Ventos 25 order number: 45 302 9 Ventos 35 order number: 45 303 0)



Cleaning carpets and other floor surfaces with the carpet nozzle (order number 58 401 8)

# Complete cleaner

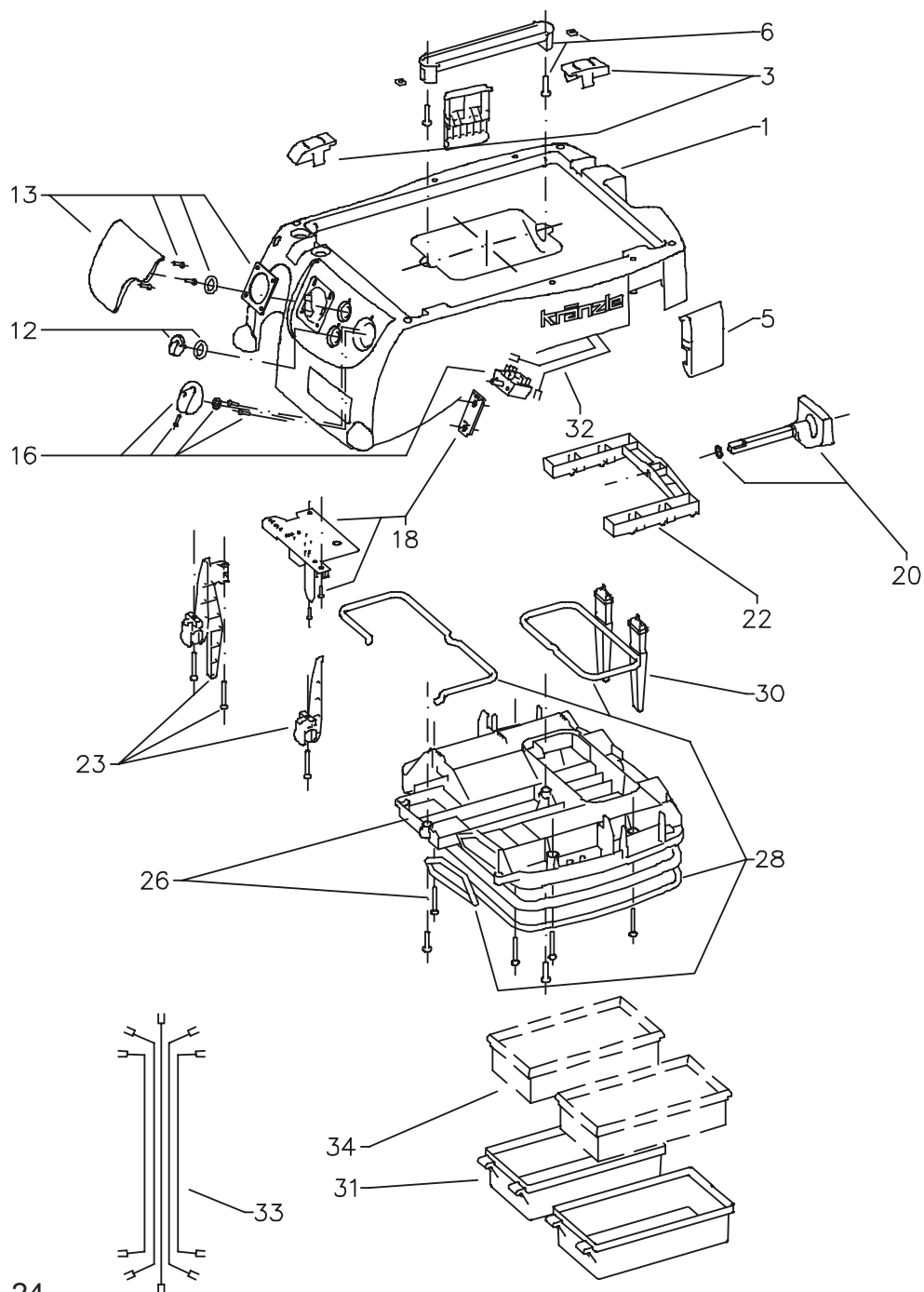


# KRÄNZLE VENTOS 25 / 35

## Spare parts list KRÄNZLE VENTOS 25 / 35 Complete cleaner

Item	Description	Qty	Order no.
1	Saugschlauch DN 36 x 3,5 m	1	45 281 9
2	Sauggriff	1	45 477 8
3	Zubehörbox	1	45 473 1
4	Typenschild für Ventos 25	1	45 236 1
4.1	Typenschild für Ventos 35	1	45 236 2
6	Filtersack für Ventos 25 (5 Stück)		45 413 9
6.1	Filtersack für Ventos 35 (5 Stück)		45 414 0
12	Faltenfilter (2 Stück)		45 470 0
13	Schmutzeimer Ventos 25 kpl. mit Deckel	1	45 280 6
13.1	Schmutzeimer Ventos 35 kpl. mit Deckel	1	45 280 5
14	Netzanschlußkabel	1	45 235 7
16	Bodendüse mit 2 Einsätzen	1	58 402 1
17	Polsterdüse	1	58 400 9
18	Saugpinsel	1	58 400 8
19	Fugendüse 200 mm	1	58 400 7
20	Adapter Saugschlauch auf Zubehör	1	58 400 6
21	Verlängerung 50 cm	1	58 401 1
22	Handrohr gebogen mit Luftschieber	1	58 401 3

# Cover



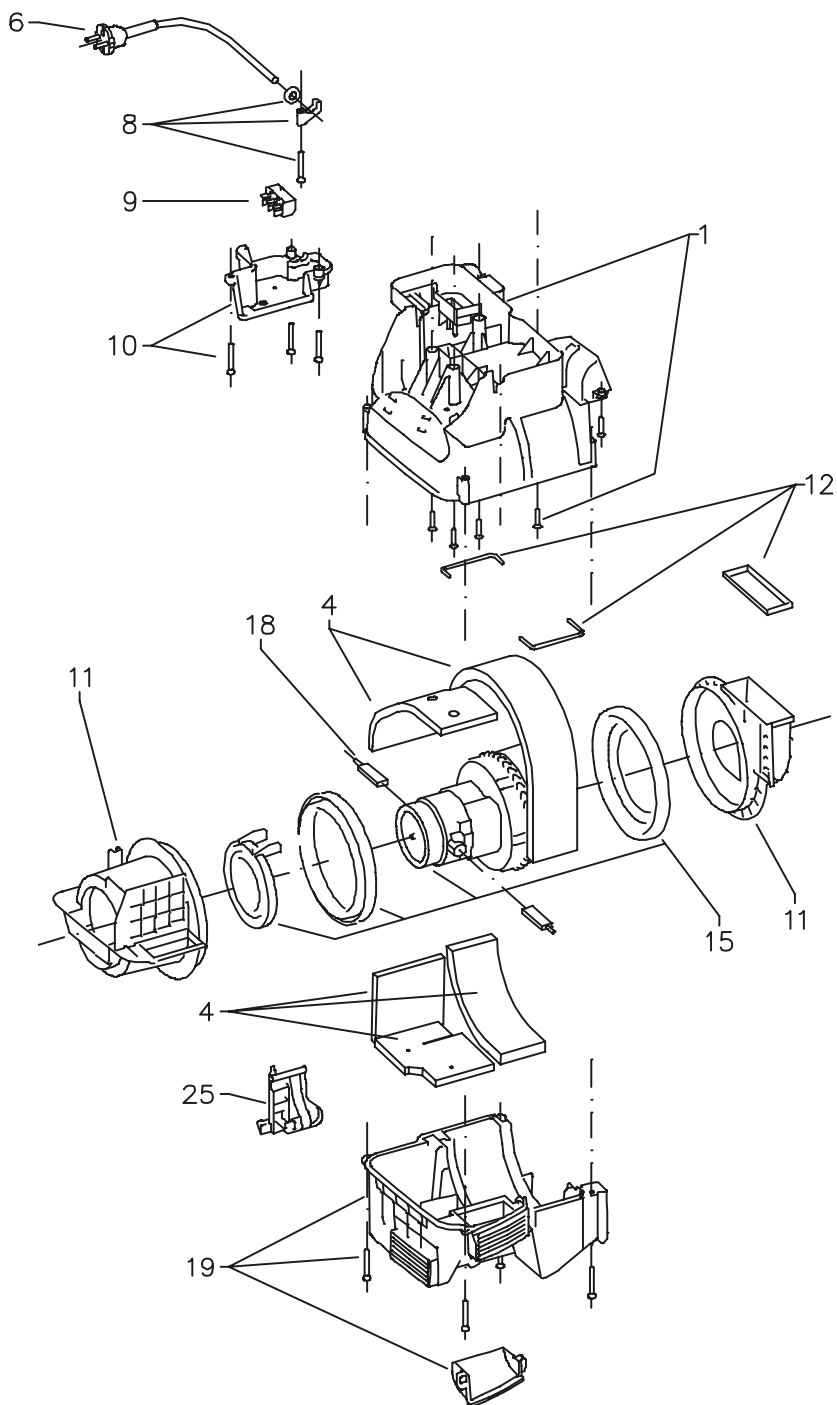


# KRÄNZLE VENTOS 25 / 35

## Spare parts list KRÄNZLE VENTOS 25 / 35 Cover

Item	Description	Qty	Order no.
1	Haube mit Pos. 3	1	45 305 3
3	Klammern	1	45 305 4
5	Verschlußklammer	2	45 220 9
6	Griff	1	45 300 5
12	Drehknopf Saugleistung	1	45 305 5
13	Blende	1	45 300 8
16	Schalter EIN / AUS	1	45 305 6
18	Steuerplatine	1	45 305 7
20	Griff Abreinigung	1	45 301 2
22	Abreinigungsgabel	1	45 305 8
23	Lagerbolzensatz	1	45 301 8
26	Filtergehäuse	1	45 305 9
28	Dichtungssatz Haube	1	45 306 0
30	Wasserkontakt (2x)	1	45 306 1
31	Filterkassette	2	45 202 0
32	Litzensatz	1	45 306 2
34	<b>Filter element main filter</b> (2 pcs.)		<b>45 470 0</b>

# Turbine

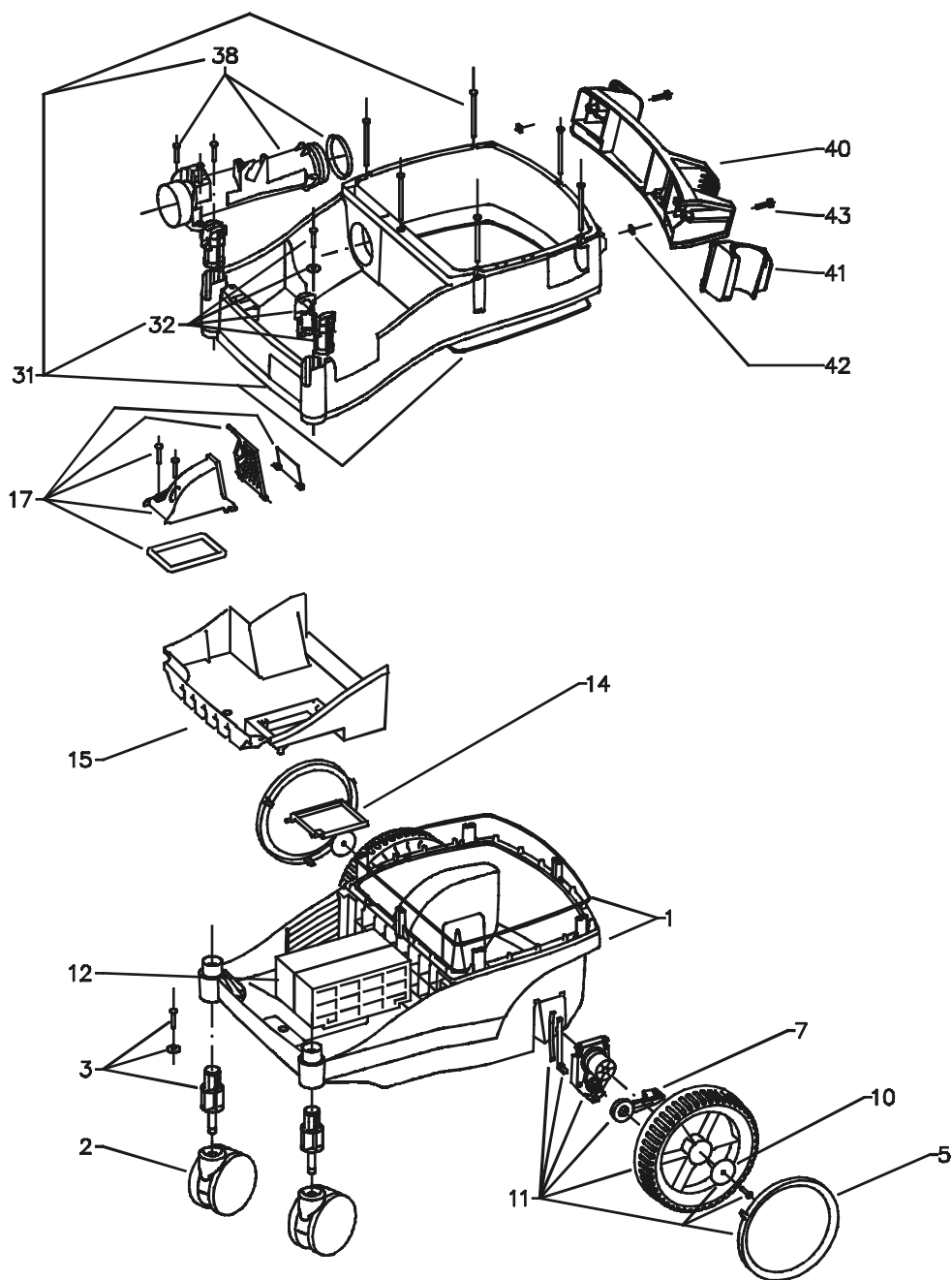


# **KRÄNZLE VENTOS 25 / 35**

## **Spare parts list KRÄNZLE VENTOS 25 / 35 Turbine**

<b>Item</b>	<b>Description</b>	<b>Qty</b>	<b>Order no.</b>
1	Turbinengehäuse	1	45 306 3
4	Dämmatten Turbine (5-teilig)	1	45 277 9
6	Netzanschlußkabel	1	45 235 7
8	Zugentlastungsschelle	1	45 306 4
9	Anschlußklemme	1	45 209 9
10	Deckel Klemmkasten	1	45 306 5
11	Turbinengehäuse	1	45 306 6
12	Dichtungen Luftkanal (3-teilig)	1	45 306 7
15	Turbine mit Motor	1	45 306 8
18	Bürstensatz für Turbinenmotor	1	45 302 3
19	Turbinenhaube	1	45 306 9
25	Stütze Saugkopf	1	45 224 5

# Chassis

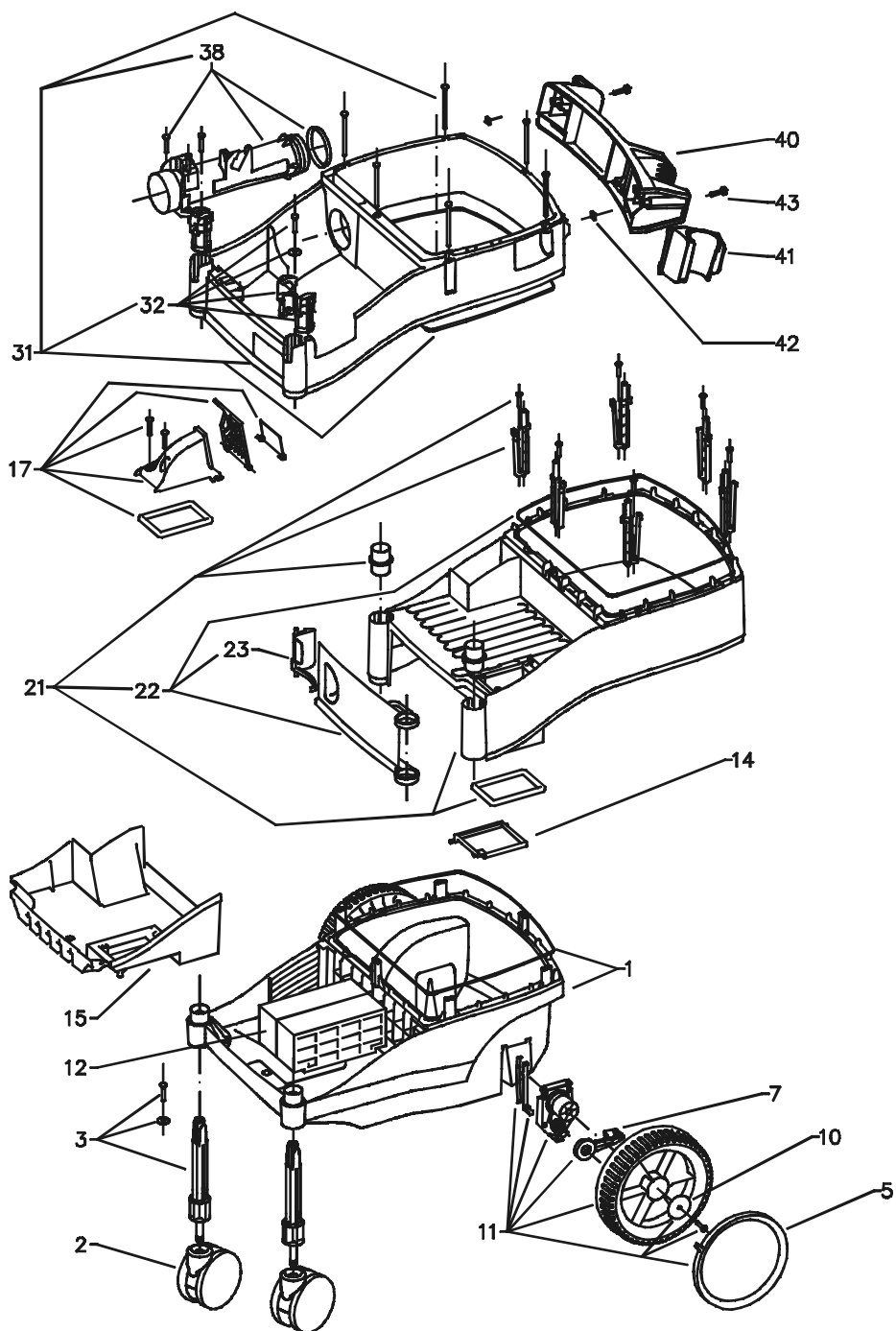


# KRÄNZLE VENTOS 25

## Spare parts list KRÄNZLE VENTOS 25 Chassis

Item	Description	Qty	Order no.
1	Fahrwerk mit Dichtung	1	45 302 5
2	Lenkrolle D100 Tandem	2	45 208 3
3	Drehachse	2	45 307 0
5	Radkappe	2	45 200 8
7	Bremshebel	2	45 221 1
10	Scheibe 40 x 6 x 1,5 (Stahl)	2	45 216 7
11	Rad komplett	2	45 303 6
12	Dämmklotz	2	45 236 7
14	Blasluftklappe	1	45 200 4
15	Abluftboden	1	45 200 3
17	Winkelhutze	1	45 307 1
31	Behälteroberteil	1	45 303 8
32	Lagerschalensatz	1	45 303 4
38	Ansaugrohr mit Dichtring	1	45 307 2
40	Kabelhalter mit Schraube und Mutter	1	45 303 5
41	Steckhalter	1	45 225 7
42	Vierkantmutter M 6	2	45 245 3
43	Schraube M 6 x 25 DIN 7985	2	45 217 0

# Chassis

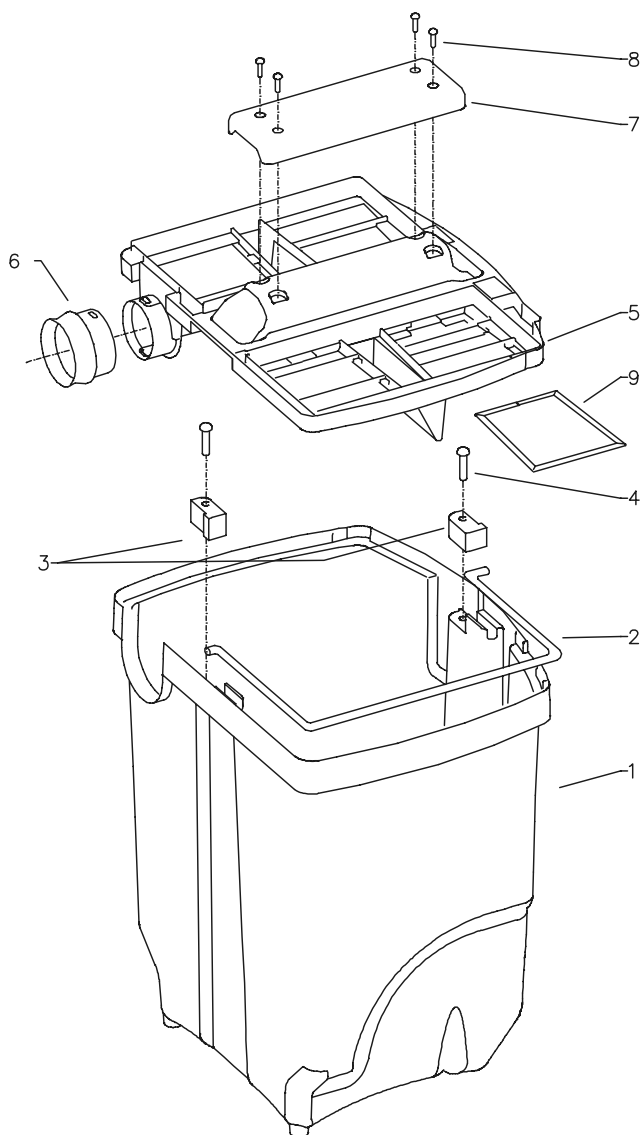


# KRÄNZLE VENTOS 35

## Spare parts list KRÄNZLE VENTOS 35 Chassis

Item	Description	Qty	Order no.
1	Fahrwerk mit Dichtung	1	45 302 5
2	Lenkrolle D100 Tandem	2	45 208 3
3	Drehachse	2	45 307 3
5	Radkappe	2	45 200 8
7	Bremshebel	2	45 221 1
10	Scheibe 40 x 6 x 1,5 (Stahl)	2	45 216 7
11	Rad komplett	2	45 303 6
12	Dämmklotz	2	45 236 7
14	Blasluftklappe	1	45 200 4
15	Abluftboden	1	45 200 3
17	Winkelhutze	1	45 307 1
21	Behältermodul	1	45 307 4
22	Türe Staufach	1	45 307 5
23	Riegel für Türe	1	45 206 8
31	Behälteroberteil	1	45 303 8
32	Lagerschalensatz	1	45 303 4
38	Ansaugrohr mit Dichtring	1	45 307 2
40	Kabelhalter mit Schraube und Mutter	1	45 303 5
41	Steckhalter	1	45 225 7
42	Vierkantmutter M 6	2	45 245 3
43	Schraube M 6 x 25 DIN 7985	2	45 217 0

# Dirt container





# KRÄNZLE VENTOS 25 / 35

## Spare parts list KRÄNZLE VENTOS 25 / 35 Dirt container with lid and integrated front filter

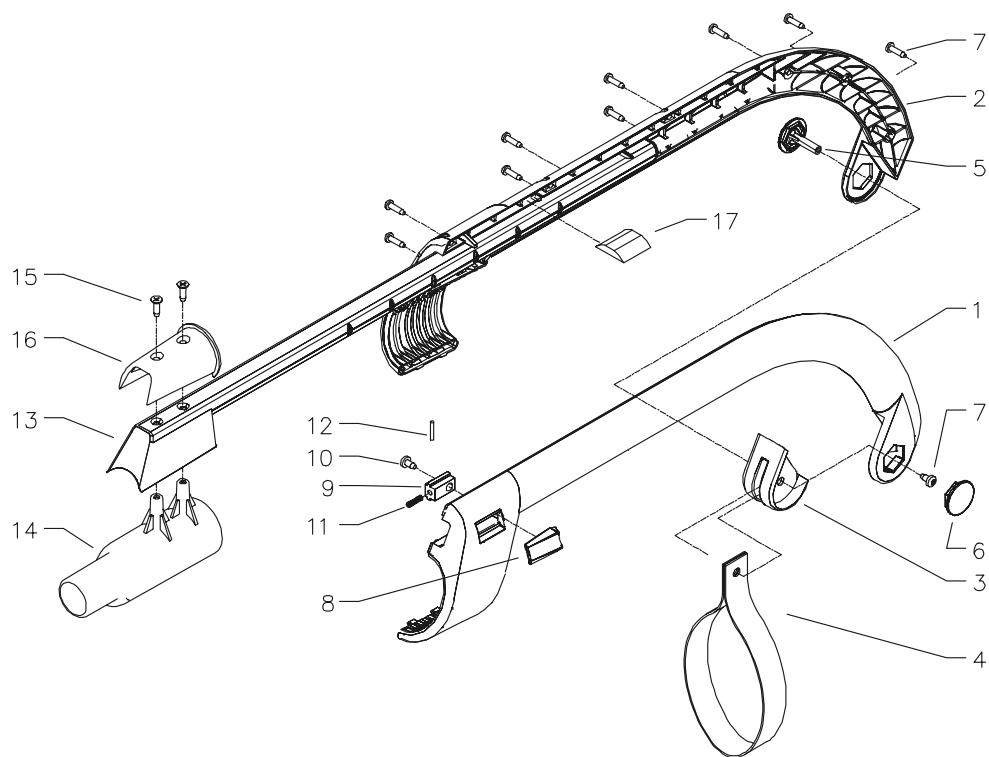
Item	Description	Qty	Order no.
1	Schmutzeimer Ventos 25	1	45 206 1
1.1	Schmutzeimer Ventos 35	1	45 206 0
2	Griff für Schmutzeimer	1	45 600 7
3	Halteklötz li + re für Eimergriff	1	45 305 2
4	Kunststoffschraube 5,0 x 25	2	41 414
5	Deckel für Schmutzeimer	1	45 409 1
6	Saugstutzen	1	45 411 9
7	Griff für Eimerdeckel	1	45 409 2
8	Kunststoffschraube	4	45 245 0
9	Vorfilter (Edelstahl)	4	45 411 8

**Container Ventos 25 kpl.** **45 302 9**  
consisting of items 1 - 4

**Container Ventos 35 kpl.** **45 303 0**  
consisting of items 1.1 - 4

**Lid compl.** **45 473 0**  
consisting of items 5 - 9

# Suction handle

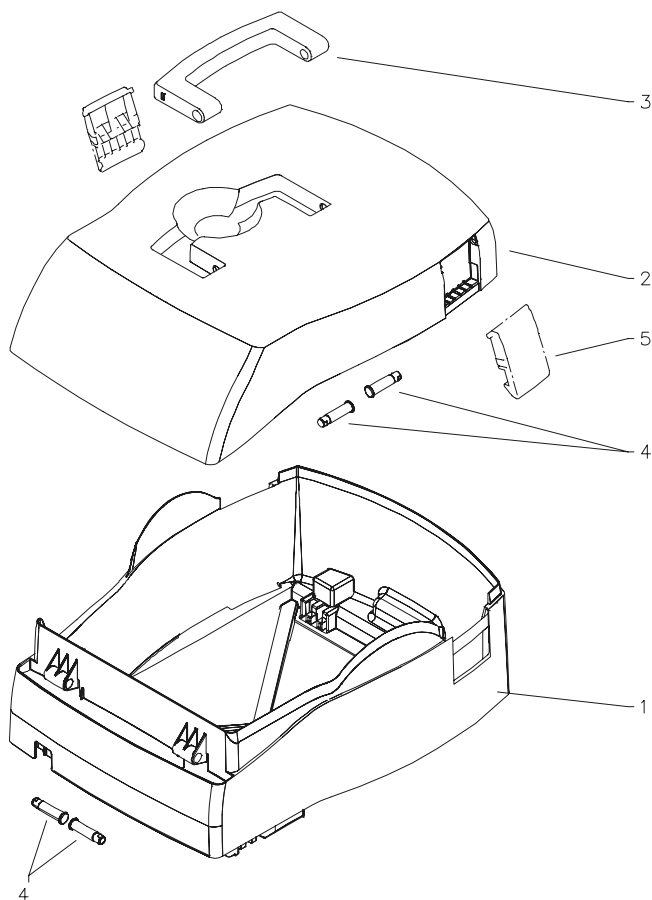


# KRÄNZLE VENTOS 25 / 35

## Spare parts list KRÄNZLE VENTOS 25 / 35 Suction handle

Item	Description	Qty	Order no.
1	Schale links	1	45 420 2
2	Schale rechts	1	45 420 3
3	Schlaufenteil	1	45 420 4
4	Gurtschlaufe	1	45 411 5
5	Deckel 1	1	45 420 5
6	Deckel 2	1	45 420 6
7	Kunststoffschraube 3,5 x 12	10	45 429 6
8	Schieber	1	45 420 7
9	Gleitstück	1	45 420 8
10	Kunststoffschraube 3,5 x 8	1	45 421 7
11	Druckfeder	1	45 420 9
12	Zylinderstift 3,0 x 21	1	45 421 0
13	Verlängerung	1	45 478 6
14	Düsenhalter	1	45 407 8
15	Kunststoffsensschraube 5,0 x 22	2	45 421 1
16	Steckführung	1	45 423 1
17	Gummifeder	1	45 437 3
<b>Handle compl.</b>			<b>45 477 9</b>
consisting of items 1- 12			
<b>Suction handle compl.</b>			<b>45 477 8</b>
consisting of items 1- 16			

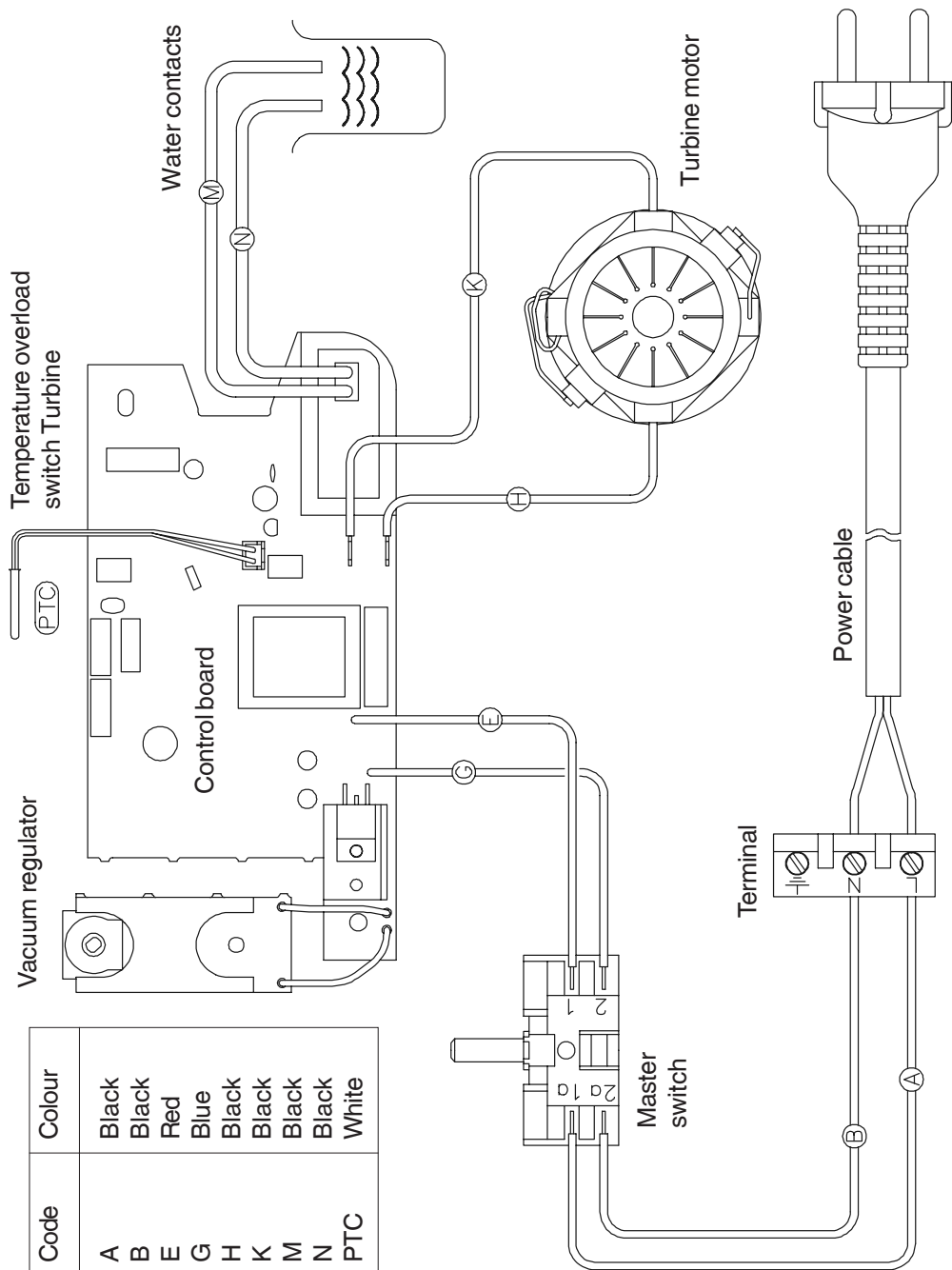
# KRÄNZLE VENTOS 25 / 35



## Spare parts list KRÄNZLE VENTOS 25 / 35 Accessories box

Item	Description	Qty	Order no.
1	Base with item 4	1	45 302 6
2	Cover with items 3, 4, 5	1	45 302 7
3	Handle with item 4	1	45 473 4
4	Bolts	4	45 411 4
5	Locking brackets	2	45 220 9
<b>Box complete</b>			<b>45 473 1</b>
Items 1 - 5			

# Circuit diagram



# ***Servicing and Care***



## **CAUTION!!!**

**Always remove the plug from the electrical socket before carrying out servicing and care work!!!**

## **Servicing and care**

All servicing and repair work requiring the cover of the motor to be opened may only be carried out by authorised customer-service workshops.

Electrical inspections must be carried out in accordance with the accident prevention rules (VBG 4) and DIN VDE 0701 parts 1 and 3.

These inspections must be carried out at regular intervals, as set forth in DIN VDE 0702 and are necessary after commissioning or modifications.

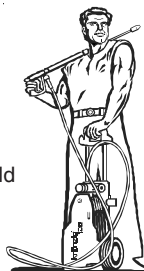
## **Warranty**

This warranty covers material and/or workmanship related defects only and does not extend to ordinary wear.

Machine must be operated according to enclosed operating instructions which are part of present warranty conditions.

All products sold directly to private customers are warrantied for a period of 24 months, whereas the warranty period for industrial purchases is limited to 12 months.

In case of any warranty claims, please have your HP cleaner together with accessories and your purchase document ready and contact your nearest dealer or authorized service point which can also be looked up in the internet at [www.kraenzle.com](http://www.kraenzle.com) .



## EC declaration of conformity

Herewith we declare  
that

**Kränzle Ventos 25**  
**Kränzle Ventos 35**

comply with the following  
provisions applying to it

**Maschinenrichtlinie 89/392/EWG**  
**Niederspannungsrichtlinie 73/23 EWG**  
**EMV-Richtlinie 89/336 EWG**  
**Lärmrichtlinie 2000/14/EG**

Applied  
harmonized standards  
in particular

**EN 60 335-2-79:2004**  
**EN 55 014-1 / A2:2002**  
**EN 55 014-2 / A1:2001**  
**EN 61 000-3-2 / A14:2000**  
**EN 61 000-3-3 / A1:2001**

Bielefeld, den 23.11.04

A handwritten signature in black ink, appearing to read 'Droitsch', written over a horizontal line.

Droitsch  
(Managing Director)

Reprint only allowed with the authorization of **Kränzle**<sup>®</sup>  
As date of 23. 11. 2004